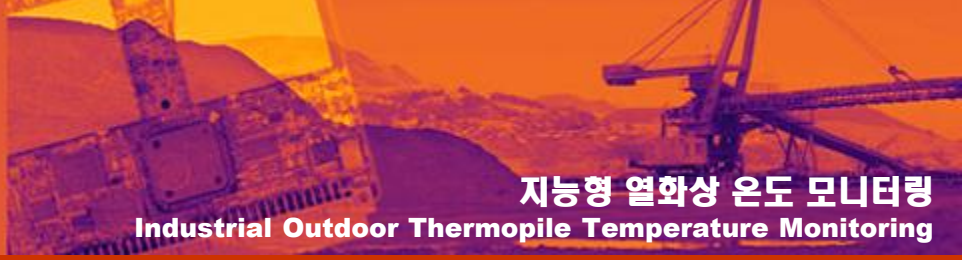


# Smart THERMOMETER

Industrial Thermopile Sensor  
 지능형 열화상 온도검출 및 제어출력

## DSTM160S

## DSTM256S



### 지능형 열화상 온도 모니터링

### Industrial Outdoor Thermopile Temperature Monitoring

**발열부위 자동추적 및 전류 출력**

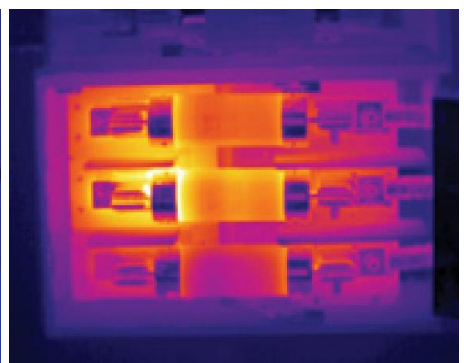
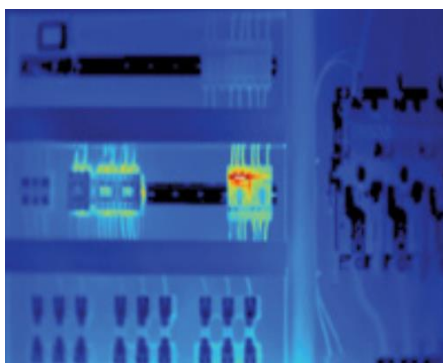
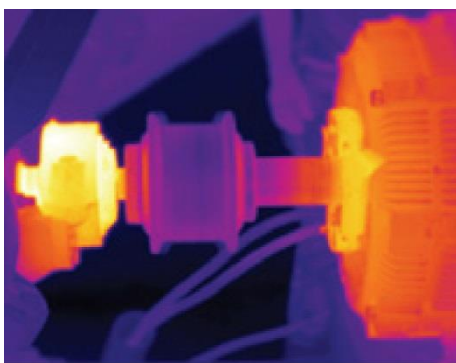
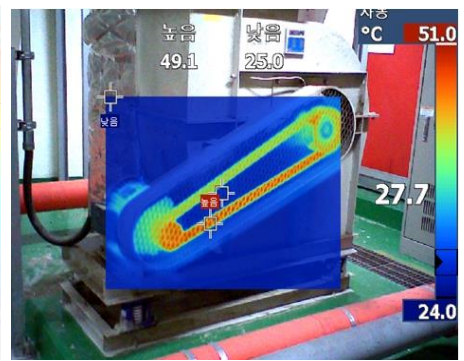
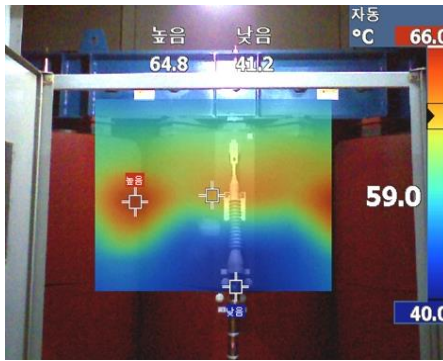
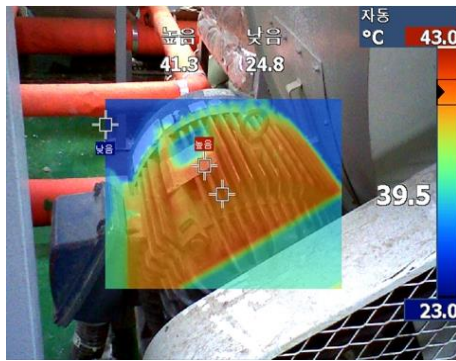


**DSTM160S / DSTM256S**

**육외용 산업용**

**열화상 Thermometer**

| MODEL                         | DSTM160S  | DSTM256S   |
|-------------------------------|---|--|
| Sensor Type                   | Non-contact Thermopile Image Sensor   | Non-contact Thermopile Image Sensor  |
| Wave Length                   | IWIR 8~14 μm  | IWIR 8~14 μm   |
| Resolution/FPS                | 160 x 120 / < 9 Hz  | 256 x 192 / 25 Hz  |
| FOV(Field of View)            | 57° (H) x 45° (V)   | 42.0° (H) x 32.1° (V)  |
| Accuracy                      | ± 5°C @(-10 ~ +140)°C<br>NETD < 50mk  | ± 5°C @(-20 ~ +120)°C<br>< 60mk  |
| Temperature Sensing Range     | Basic Mode: -10 to +140 °C<br>(Low Gain Mode: -10 to +400 °C)   | Basic Mode: -20 to +120 °C<br>(Extended Mode: 100°C ~ 450 °C)  |
| Input Signal                  | Non-contact Thermopile Data   | Non-contact Thermopile Data  |
| Output Signal (Display)       | Analog 4~20mA / Temperature<br>Digital Contact Relay / Alarm<br>USB Display S/W(Configuration Setup)  | Analog 4~20mA / Temperature<br>Digital Contact Relay / Alarm<br>USB Display S/W(Configuration Setup) |
| Communication I/F             | USB 2.0 & RS-232/Serial (Monitoring & Configure Setup)  |  |
| Application (Configure Setup) | Thermal Temperature Monitoring and Control<br>Programmable Analog Output: Min/Max/Average Configure<br>Programmable Alarm Output: Min or Max Configure<br><b>대상설비 발열부위 자동추적 및 전류 출력</b> |  |
| Power Input                   | 24VDC/2.0A  |  |
| Operating Temperature         | -20 to +60 [°C] / with 24VDC  |  |
| Dimension [mm]                | 142(W)x128(H)x322(D)  |  |



**DSi** 다산인포텍  
 DASAN InfoTek

서울특별시 금천구 가산디지털1로 226  
 에이스하이엔드타워5차 1802호  
 가산동 (서울디지털산업단지, 3단지)  
 TEL : 02-868-8277 FAX : 02-868-8233