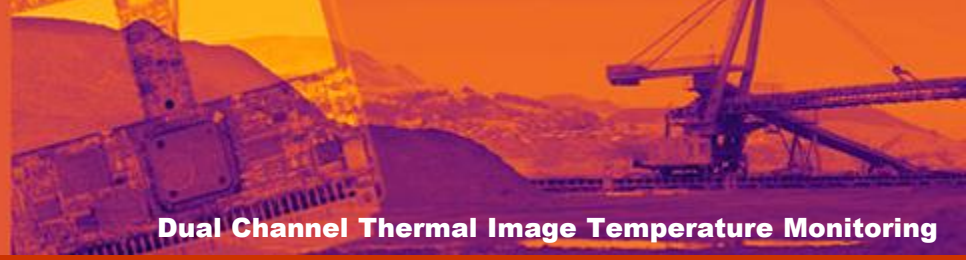


STM200A

[열화상온도감시장치]

Thermal Camera Controller



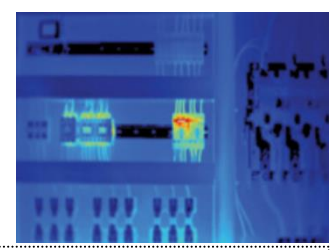
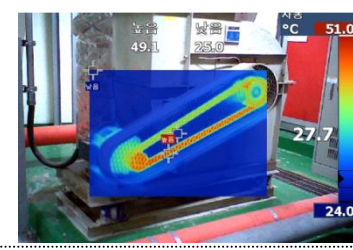
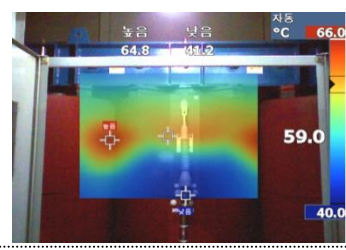
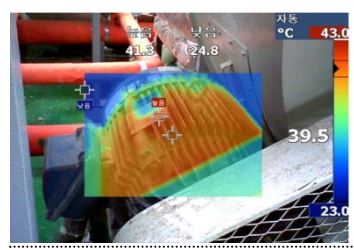
Dual Channel Thermal Image Temperature Monitoring

- 동시 2개 열화상 실시간 온도 감시 및 제어신호 출력
- 각 화상의 복수 영역 ALARM 온도 설정 및 운용
- 전류(4~20mA) 및 접점(RELAY) 신호출력으로 제어-회로 구성 가능
- 통신 방식의 원격모니터링 시스템 구성가능 (Network-DVR)
- DUAL-CHANNEL 구성으로 연동설비 동시 감시
- 열악한 산업현장에서 안정된 성능과 신뢰성 제공
- 다양한 열화상 카메라 적용 가능

- Dual Channel Thermal Image Monitoring Operation
- Dual Analog Current Outputs (2CH 4~20mA)
- Dual Digital Relay Outputs (2CH Alarm & Fault)
- Programmable Temperature Configuration Setup
- Programmable TCP/IP PLC Communication Support
- Remote Network Monitoring Support



MODEL	STM200A
CPU	Type: ARM 64bit Quad-Core Frequency: 1.2GHz
Display	7inch Color Touch LCD / 800x480
Memory	1GB-RAM, 32GB-Flash(eMMC)
OS	Embedded Linux 5.x
Power	24VDC/2.0A (Optional 110/220VAC)
Network I/F	Ethernet TCP/IP (UTP/STP)
Sensor I/F	USB 2.0 & RS-232/485 Serial
Control Output	Analog: Dual 4~20mA / Temperature Signal Digital: Dual Relay Contact / ALARM Signal
Environmental	Operating Temp: 0 to +60 [°C]
Dimension [mm]	200(W) x 300(H) x 110(D)



Smart 열화상 온도감시 및 제어

